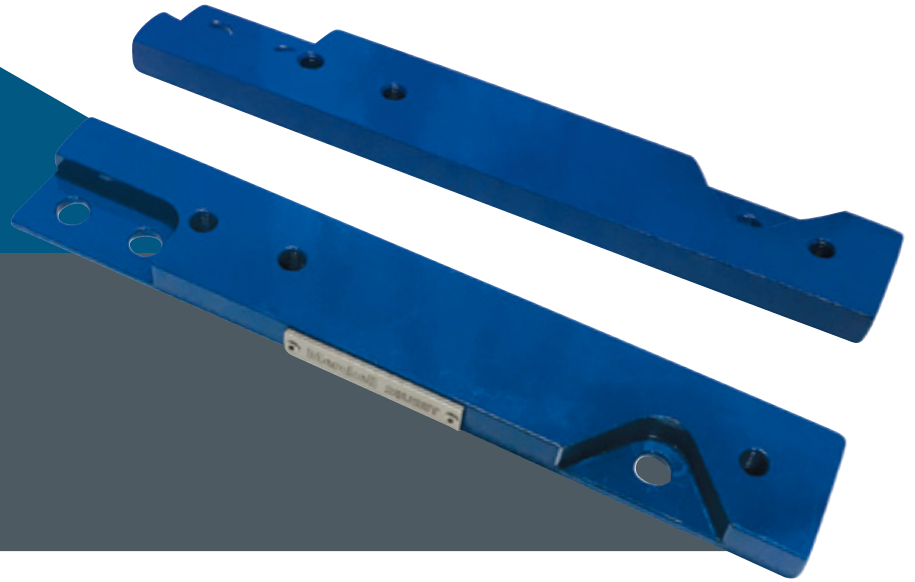






INNOVATIVE PRODUCTS  
DESIGNED BY RELIABILITY EXPERTS



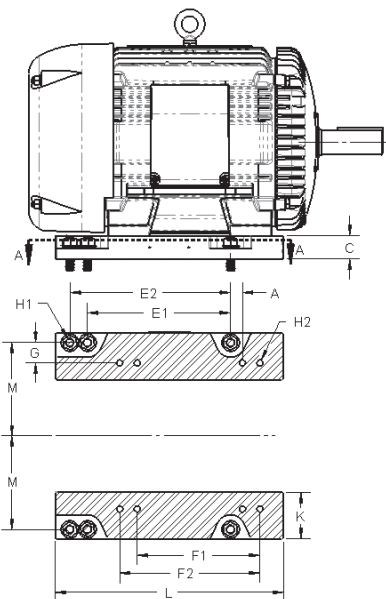
-  Made with cold-rolled steel
-  Fully machined parts
-  Sandblasted and powder coated
-  Parts in stock

Merckell's standard transition bases are designed to adapt a T-Series electric motor on a U-Series motor base.

These parts are made with machined cold-rolled steel to eliminate the angular support leg and guarantee a high quality product.


The machining is designed to allow the electric motor to be loosened or tightened for tensioning needs without losing any time.

	A	C	E1	E2	F1	F2	G	H1	H2	K	L	M1
25U21T	1-1/8	1	8-1/4	10	5-1/2	7	3/4	9/16	3/8 - 16	2-1/2	13	3-3/4
28U25T	1-3/8	3/4	9-1/2	11	8-1/4	10	1/2	9/16	1/2 - 13	2-1/2	14-1/2	5-1/2
32U28T	1-1/2	1	10-1/2	12	9-1/2	11	3/4	11/16	1/2 - 13	3	16	6-1/4
36U32T	1-3/4	1	11-1/4	12-1/4	10-1/2	12	3/4	11/16	5/8 - 11	3-1/2	16-3/4	7
40U36T	2	1	12-1/4	13-3/4	11-1/4	12-1/4	1	13/16	5/8 - 11	4	18-3/4	8
44U36T	2-1/4	1	14-1/2	16-1/2	12-1/4	13-3/4	1	13/16	3/4 - 10	4-3/4	22	9
44U40T	4-3/8	2	14-1/2	16-1/2	11-1/4	12-1/4	2	13/16	5/8 - 11	4	24	9



Made in North America

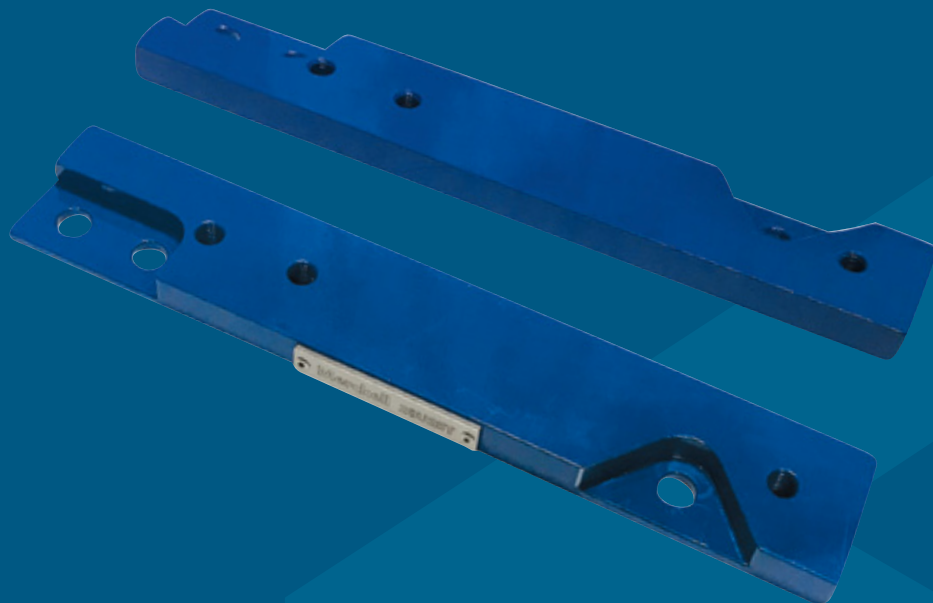
 **HEAD OFFICE**  
70 Maillhot Street  
East Angus, Quebec  
JOB 1R0  
T. : 819-451-0697  
info@merckell.com

 **WORKSHOP**  
1795 Industriel Boulevard  
Door no. 7  
Magog, Quebec  
J1X 5P2

 **REPRESENTATIVE**  
Simon McConnell  
T. : 819-451-2147  
smcconnell@merckell.com


# Industrial Reliability Parts

INNOVATIVE PRODUCTS  
DESIGNED BY RELIABILITY EXPERTS



## STANDARD MOTOR TRANSITION BASES U-SERIES TO T-SERIES

 **HEAD OFFICE**  
70 Maillhot Street  
East Angus, Quebec  
J0B 1R0  
T. : 819-451-0697

 **WORKSHOP**  
1795 Industriel Boulevard  
Door no. 7  
Magog, Quebec  
J1X 5P2

 **REPRESENTATIVE**  
Simon McConnell  
T. : 819-451-2147

 [info@merckell.com](mailto:info@merckell.com)