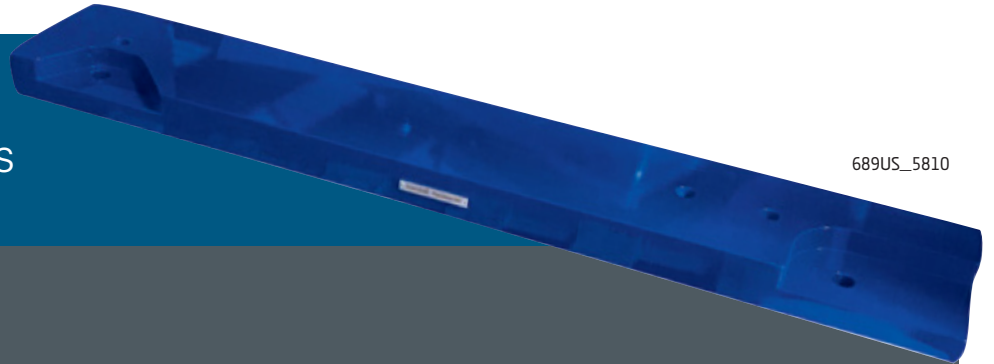







INNOVATIVE PRODUCTS
DESIGNED BY RELIABILITY EXPERTS



689US_5810

-  Engineering and drawing of parts
-  Made with cold-rolled steel
-  Fully machined parts
-  Sandblasted and powder coated
-  Customized colours

Merckell's team of experts can engineer, draft, machine and finish custom transition bases of all formats. It has an inventory of technical drawings ready to be put into production for urgent operational needs.

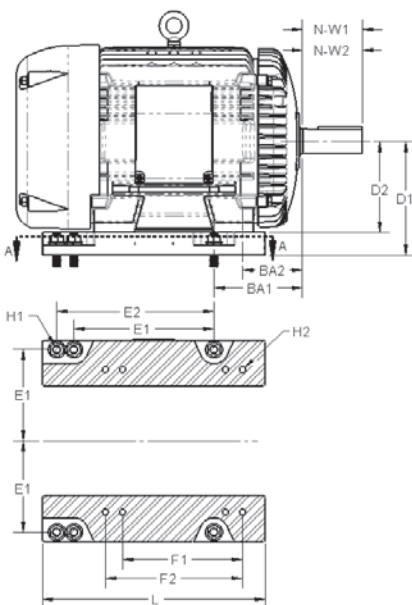
These parts are made with cold-rolled steel machined and grinded to eliminate the angular support leg and guarantee a high-quality product.

The machining is designed to allow the electric motor to be loosened and tightened for tensioning needs without losing any time.

	BA	D	N-W	E1	E2	F1	F2	H1	H2
Existing motor									
New motor									


Fill out the sizing chart for your transition base's design

MANUFACTURING DETAILS	
Material	
Colour (RAL) Default: RAL 5002	
Positioning block	<input type="checkbox"/> Required <input type="checkbox"/> Not required



Made in North America

 **HEAD OFFICE**
70 Maillhot Street
East Angus, Quebec
JOB 1R0
T. : 819-451-0697
info@merckell.com

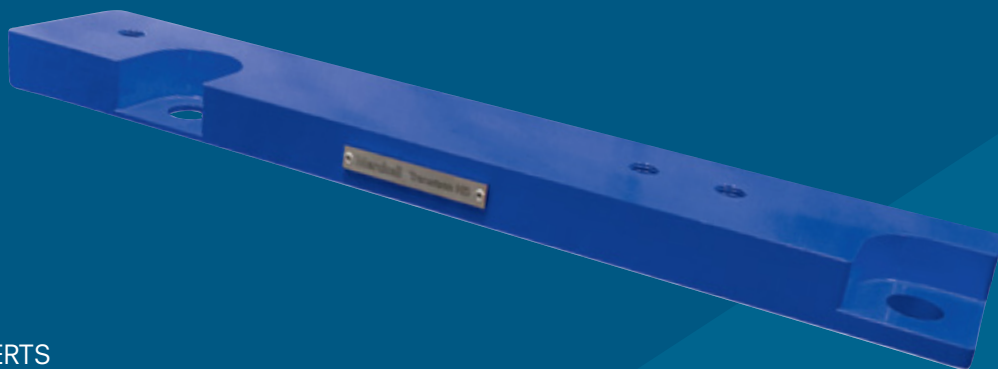
 **WORKSHOP**
1795 Industriel Boulevard
Door no. 7
Magog, Quebec
J1X 5P2

 **REPRESENTATIVE**
Simon McConnell
T. : 819-451-2147
smcconnell@merckell.com

merckell.com


Industrial Reliability Parts

INNOVATIVE PRODUCTS
DESIGNED BY RELIABILITY EXPERTS



CUSTOM TRANSITION BASES

 **HEAD OFFICE**
70 Maillhot Street
East Angus, Quebec
JOB 1R0
T. : 819-451-0697

 **WORKSHOP**
1795 Industriel Boulevard
Door no. 7
Magog, Quebec
J1X 5P2

 **REPRESENTATIVE**
Simon McConnell
T. : 819-451-2147

 info@merckell.com